

重型 CS-2000 80 系统

钢制支撑系统是在机器和工厂建设中稳定可靠的连接控制装置的理想解决方案。CS-2000 80系统具有坚固的钢支撑型材和各种系统组件和连接器。这可以实现各种系统解

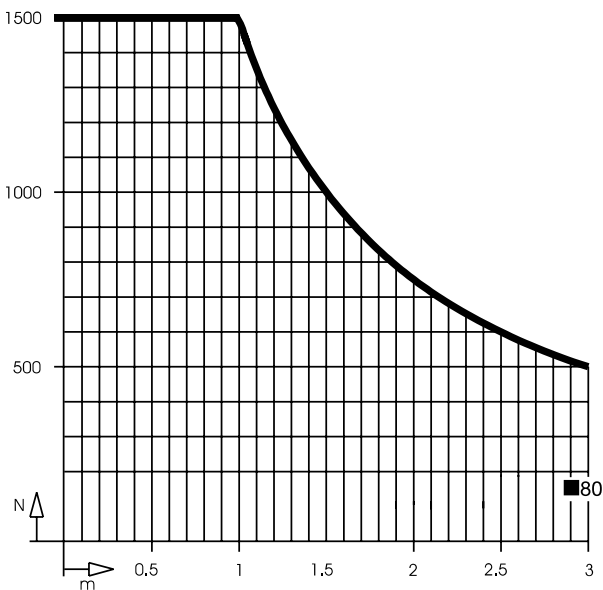
决方案，最长可达 3 m 的连接管和 150 kg 的负载。安装开口宽敞，便于安装电缆。旋转角度限制器或信号灯适配器等各种附件完善了产品范围。

产品特征


- 所有连接器都具有安装开口，便于电缆安装
- 用于固定电缆的集成式应变消除装置
- 所有关节和连接器均采用免维护的无间隙轴承
- 用于精确对齐支撑管的调节选项
- 墙壁和中间连接器，提供可调节扭矩和可改装旋转角度限位器（作为附件供货）
- 具有可调节紧固度和可改装旋转角度限制装置的法兰连接器
- 所有组件都可以“架空安装”

CS-2000 80系统

静负载的负载图



应用示例



**悬臂系统CS-2000 80 系统
配CC - 3000机箱**

- 支撑柱
- 悬挂版本



**悬臂系统CS-2000 80 系统,
在顶部连接**

- 带波纹管的墙壁连接器
- 弯头
- CS-2000支撑管
- CC-4000上的连接器



**悬臂系统CS-2000 80 系统
配CC - 4000机箱**

- 支撑柱
- 立式版本



**悬臂系统CS-2000 80 系统
在底部连接**

- CC - 4000上的连接器
- CS - 2000支撑管
- 弯头
- 带波纹管的墙壁连接器

悬臂系统 CS-2000 80系统

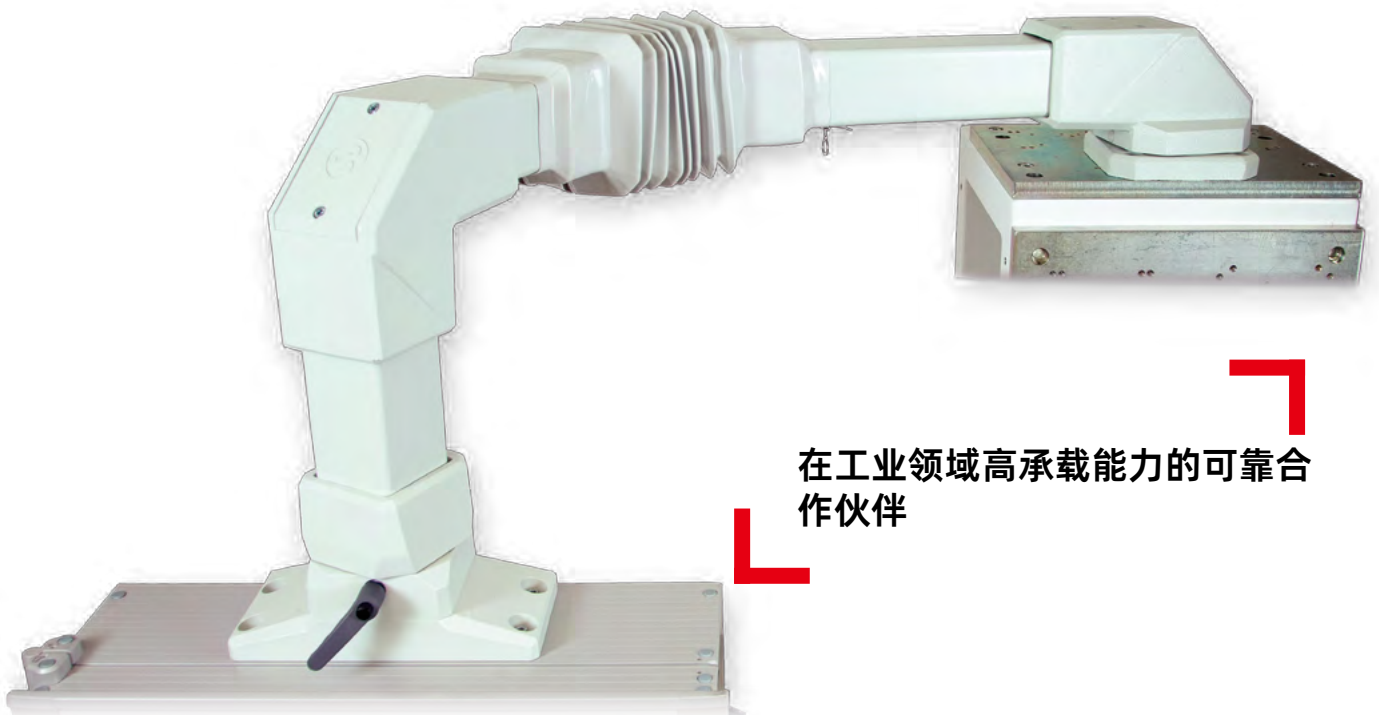
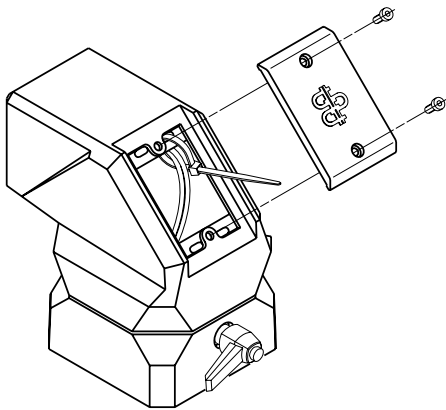
材料

- 铝组件: 铸铝
- 铸钢组件: GGG 40
- 焊接钢结构: St 37
- 支撑管: St 37
- 支承: St/PTFE或POM
- 密封: 氯丁橡胶(CR)
- 安装孔: 铸铝
- 波纹管: 聚氯乙烯(PVC)

颜色

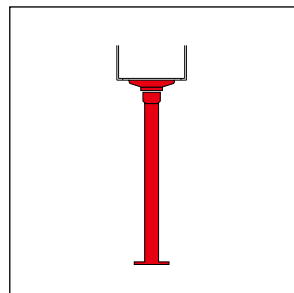
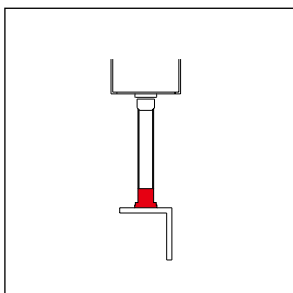
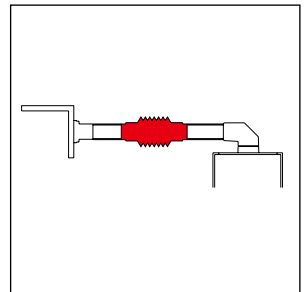
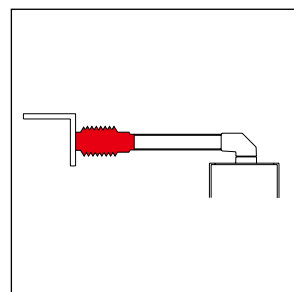
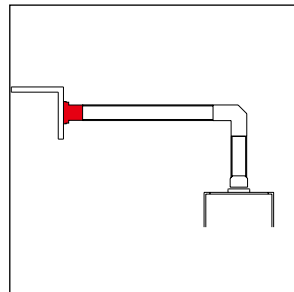
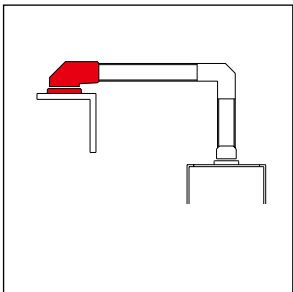
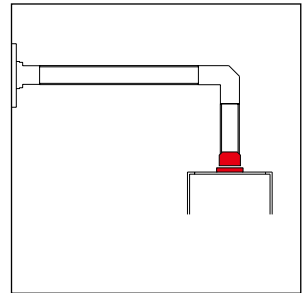
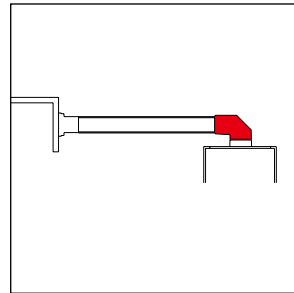
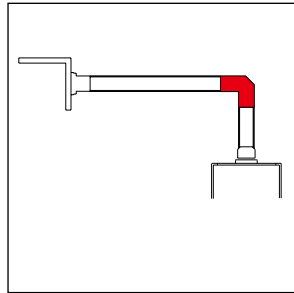
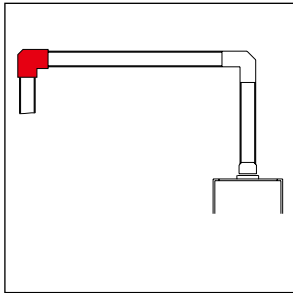
- 悬臂系统组件:
RAL 7035 (浅灰色)
- 波纹管:
RAL 7035 (浅灰色)
- 管:
RAL 7035 (浅灰色)

大型电缆安装开口



在工业领域高承载能力的可靠合作伙伴

悬臂系统CS-2000 80系统应用示例 广泛的配置选项



料号

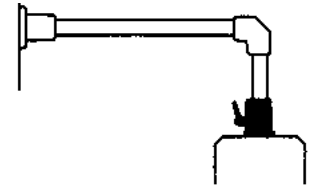
应用示例



标准机箱连接器, 法兰

1016702000 RAL7035 浅灰

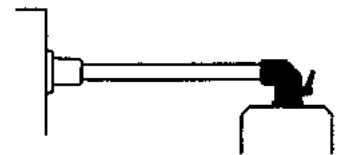
- 旋转角度300°带限位挡块
- 提供密封件和安装螺钉
- 可调节扭矩
- 材料: 铝
- 重量: 3270 g



弯头机箱连接器, 法兰

1016705000 RAL7035 浅灰

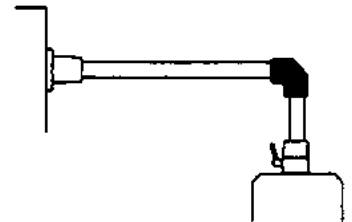
- 旋转角度300°带限位挡块
- 提供密封件和安装螺钉
- 可调节扭矩
- 安装孔
- 材料: 铝
- 重量: 4100 g



弯头

1016708000 RAL7035 浅灰

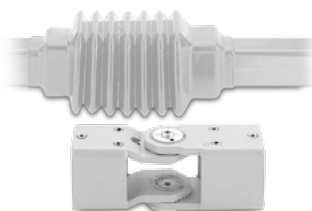
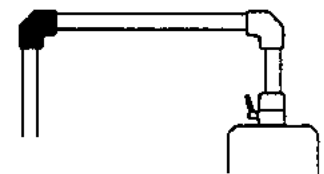
- 安装孔
- 完整的密封件
- 材料: 铝
- 重量: 2900 g



扭矩负载弯头

1016711000 RAL7035 浅灰

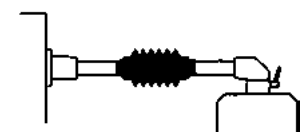
- 更高的承载能力
- 完整的密封件
- 安装孔
- 材料: GGG
- 重量: 8500 g



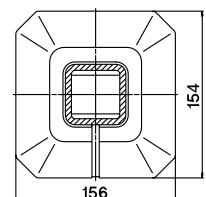
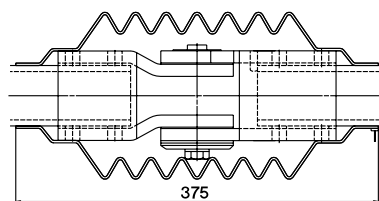
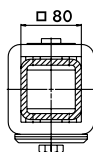
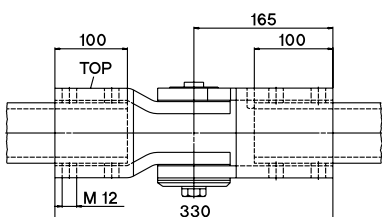
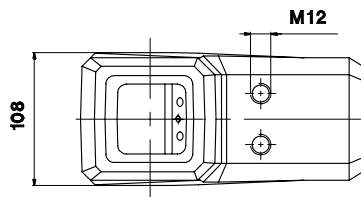
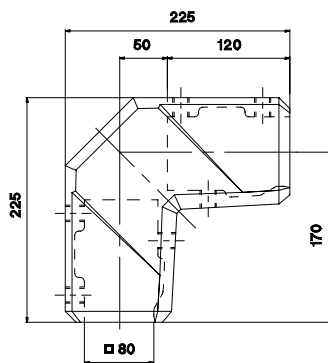
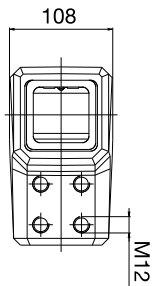
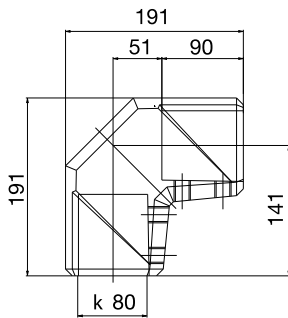
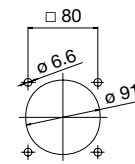
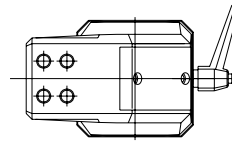
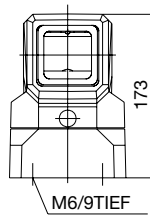
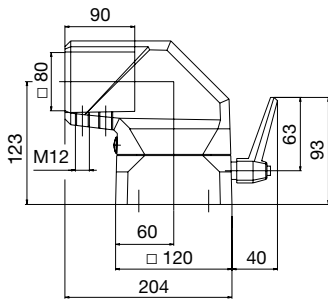
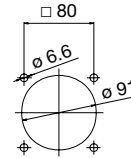
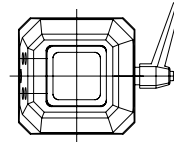
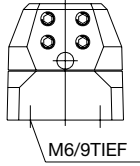
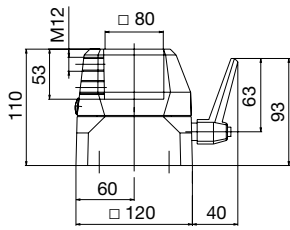
中间连接器

1016471000 RAL7035 浅灰

- 随附滑动紧固件,提供护套
- 旋转角度180°,在两端有限位挡块
- 可调节扭矩
- 材料: 钢
- 重量: 9700 g



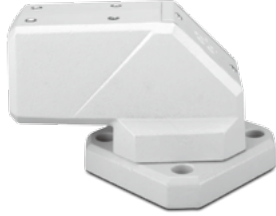
尺寸mm



悬臂系统 CS-2000 80系统

料号

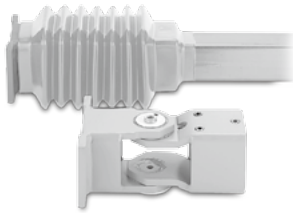
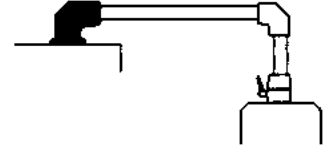
应用示例



顶部连接器

1016714000 RAL7035 浅灰

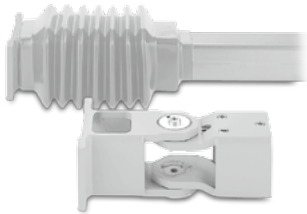
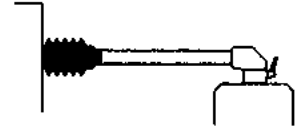
- 旋转角度306°带限位挡块
- 提供密封和安装螺钉
- 材料: GGG
- 重量: 20620 g



墙壁连接器

1016473000 RAL7035 浅灰

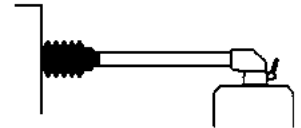
- 随附滑动紧固件,提供护套
- 旋转角度180°, 在两端有限位挡块
- 扭矩可调节
- 材料: 钢
- 重量: 9250 g



带有电缆通道的墙壁连接器

1016474000 RAL7035浅灰

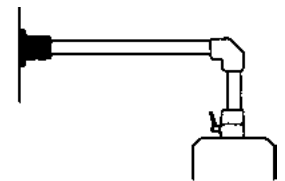
- 随附滑动紧固件,提供护套
- 旋转角度180°, 在两端有限位挡块
- 扭矩可调节
- 材料: 钢
- 重量: 9500 g



墙壁法兰

1016472000 RAL7035 浅灰

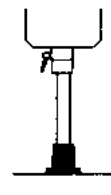
- 带密封件
- 材料: GGG
- 重量: 9100 g



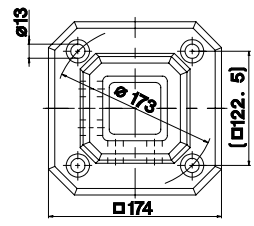
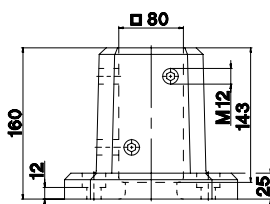
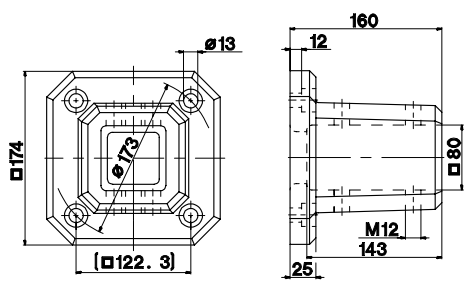
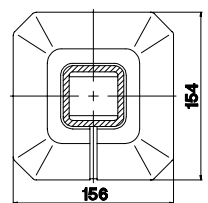
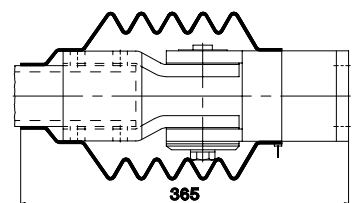
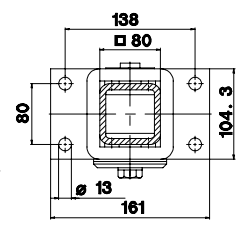
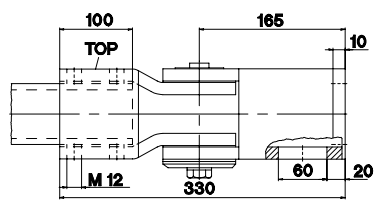
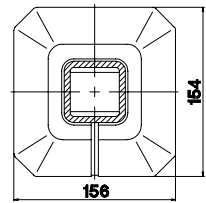
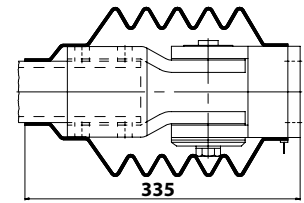
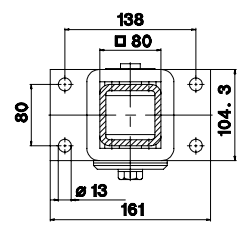
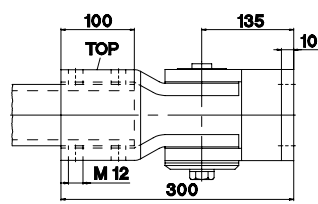
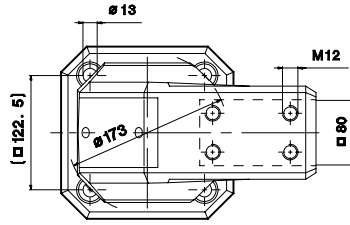
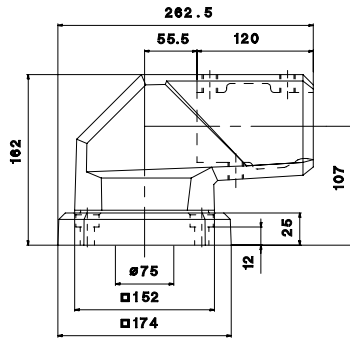
基座

1016475000 RAL7035 浅灰

- 带密封件
- 材料: GGG
- 重量: 9240 g



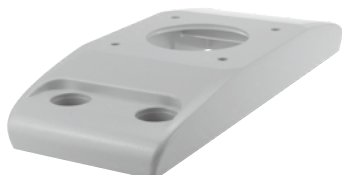
尺寸mm



悬臂系统 CS-2000 80系统

料号

应用示例

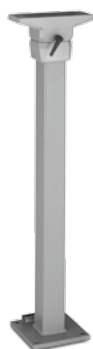
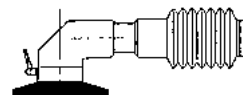


转接头法兰

1016898000

RAL7035 浅灰

- 材料: 铝
- 重量: 1100 g

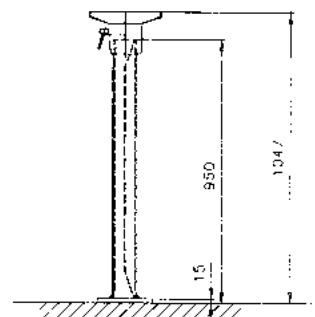


支撑柱, 立式

1016558000

RAL7035 浅灰

- 材料: 钢 / 铝
- 重量: 27220 g

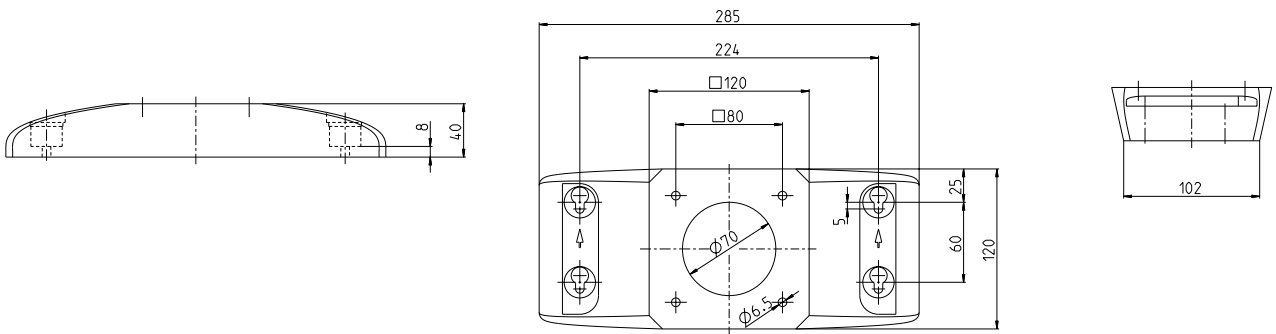


管资料 RAL7035 浅灰



可用管长度	料号	重量 kg
长度 mm		
250 mm	9527114000	2.0
500 mm	9527115000	5.30
750 mm	9527116000	8.10
1000 mm	9527117000	11.00
1250 mm	9527118000	13.50
1500 mm	9527119000	16.50
2000 mm	9527121000	21.20
3000 mm	9527123000	33.00

尺寸mm



配件

料号



旋转角度限制器

9805176000

- 易于改装
- 安装后, 这些滚珠将限制旋转角度
- 以9°为增量调节
- 材料: PA



信号灯适配器

9805189000

弯头部件

RAL7035 浅灰

9805188000

顶部接头

RAL7035浅灰

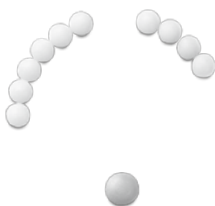
- 易于改装
- 外径为25 mm的信号灯管安装孔
- 通过螺钉固定
- 材料: 铝



墙壁和中间连接的 旋转角度限位器

9805062000

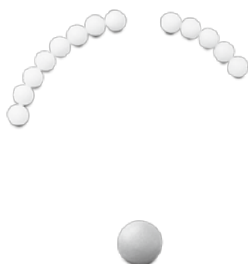
- 用于墙壁和中间接头的可改装附件套件
- 旋转角度范围可调, 固定增量 15°
- 材料: 钢



连接器组件的旋转角度限位器

9805177000

- 易于改装
- 安装后, 这些滚珠将限制旋转角度
- 以8.5°为增量调节
- 材料: PA



旋转/倾斜连接器的旋转角度限位器

9805130000

- 易于改装
- 安装后, 这些滚珠将限制旋转角度
- 以8.5°为增量调节
- 材料: PA